

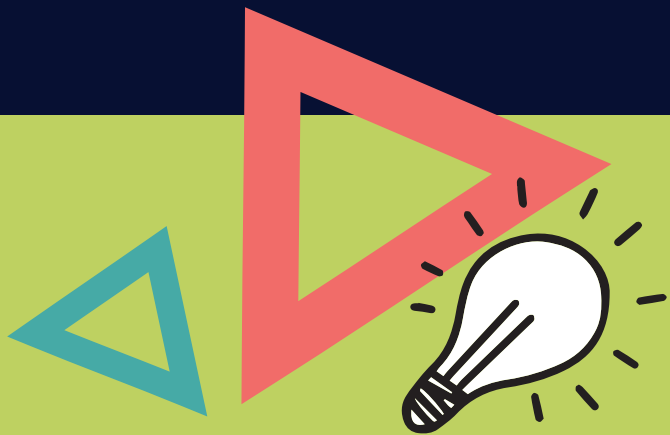
KARTY DO GRY „PIOTRUŚ”



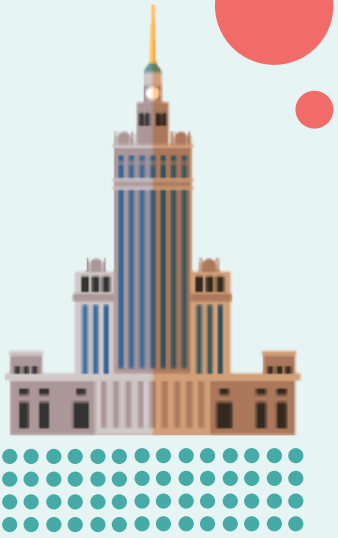
Talia do Piotrusia składa się z 25 kart. W skład talii wchodzi 12 kart i jedna niemająca pary, nazywana „Czarnym Piotrusiem”.

ZASADY GRY:

Gracze mają za zadanie dobrać karty w pary i jak najszybciej pozbyć się swojego wachlarza. W talii znajduje się „Piotruś”, czyli karta bez pary. Ten, kto zostanie z nią na koniec gry, przegrywa rozgrywkę!



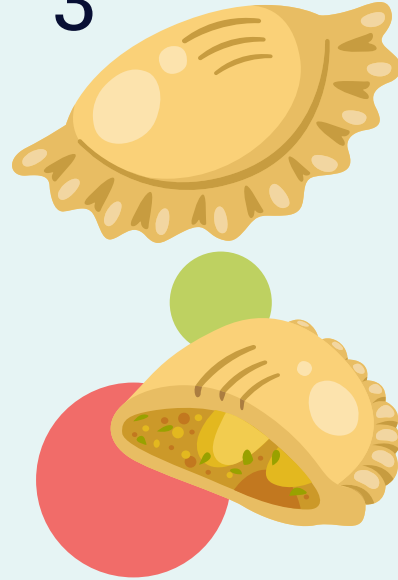
1



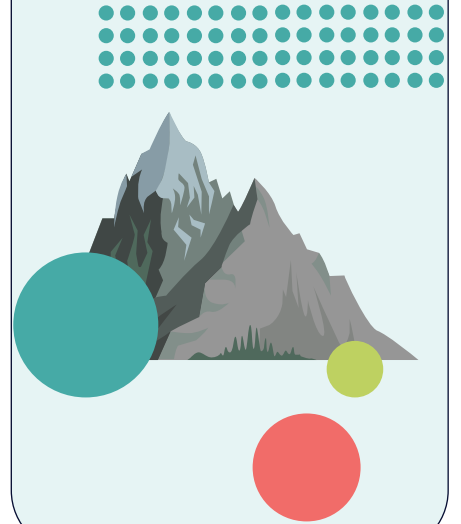
2



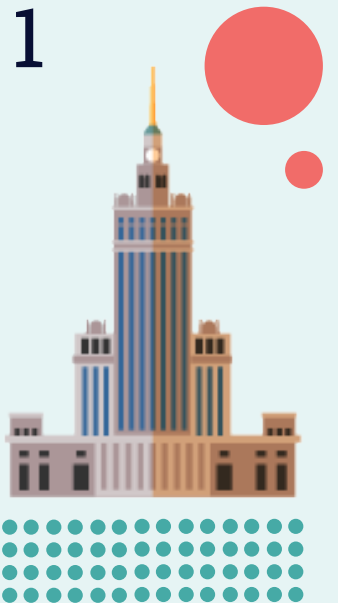
3



4



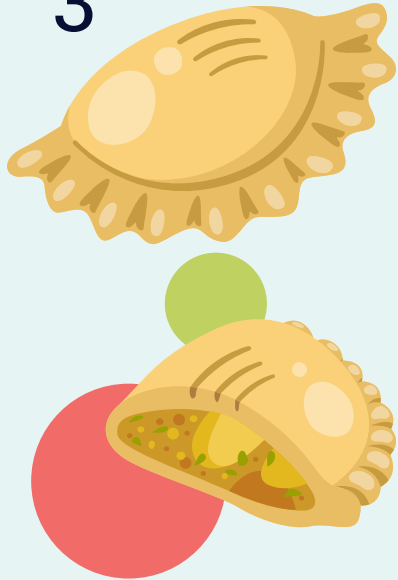
1



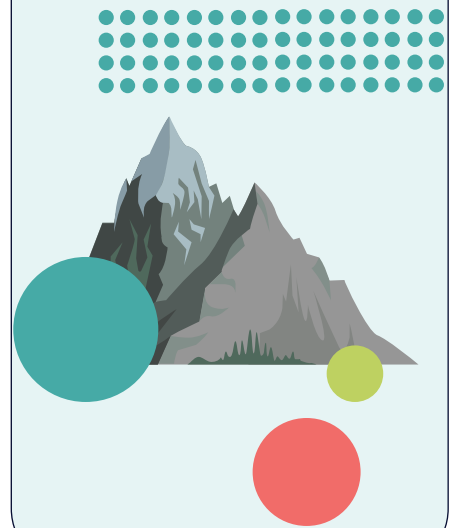
2

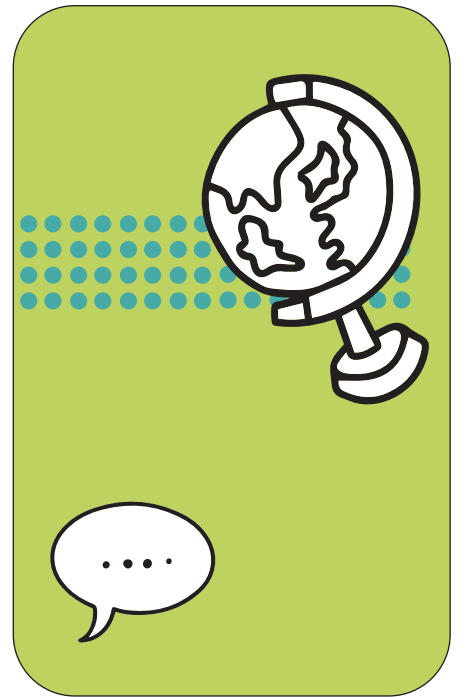
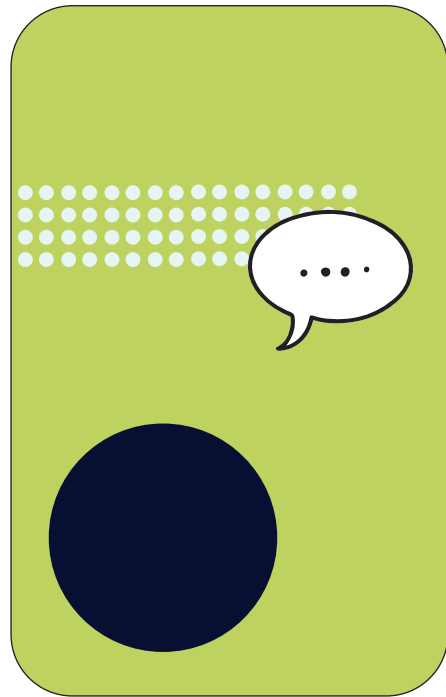
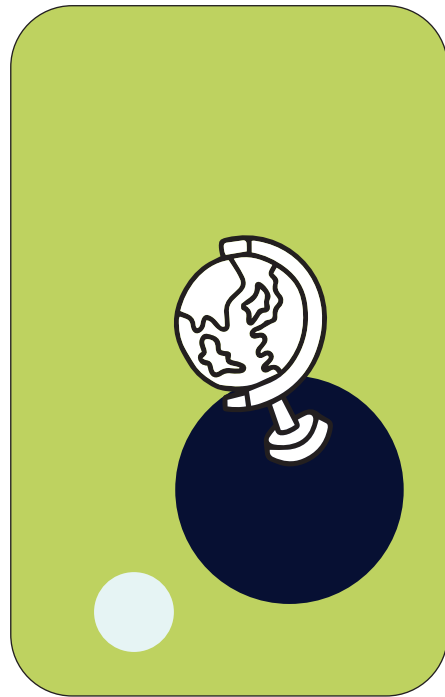
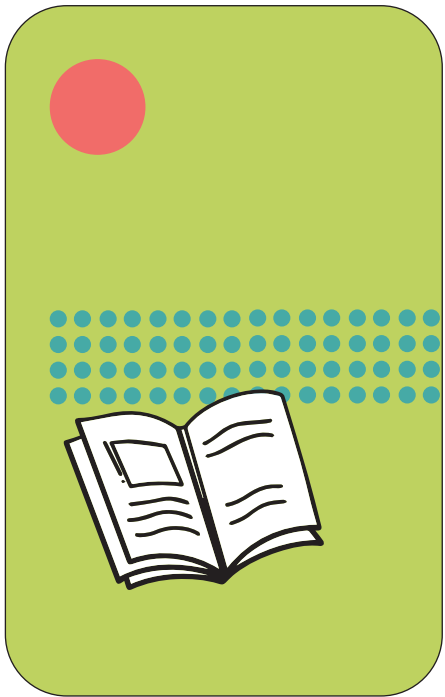
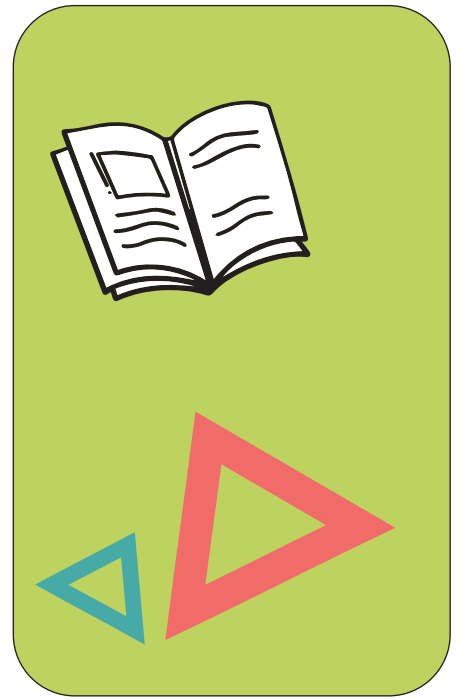
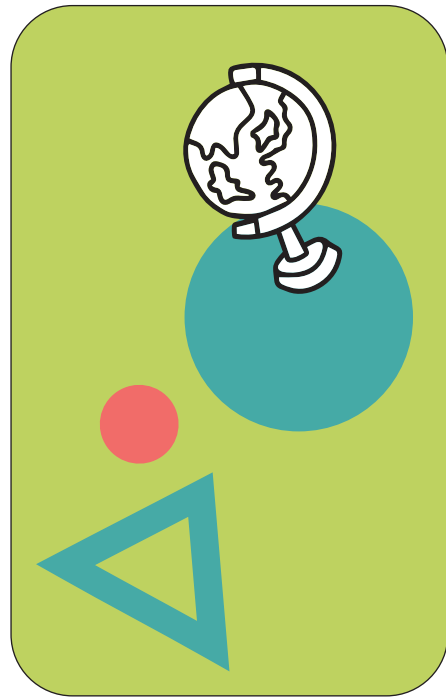
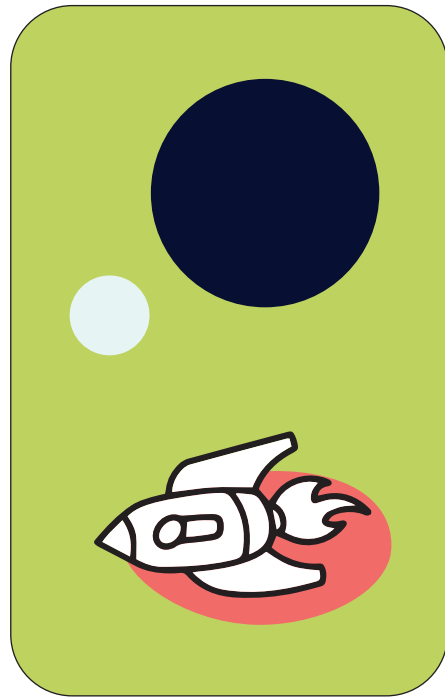
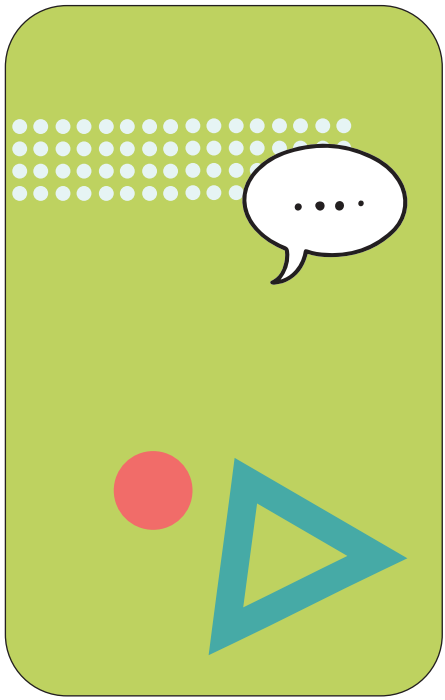


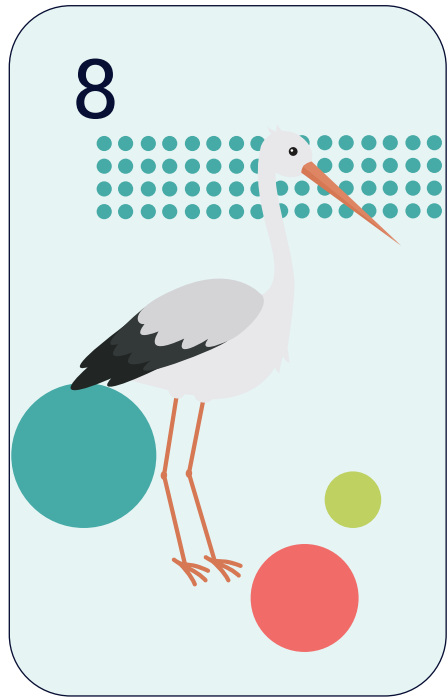
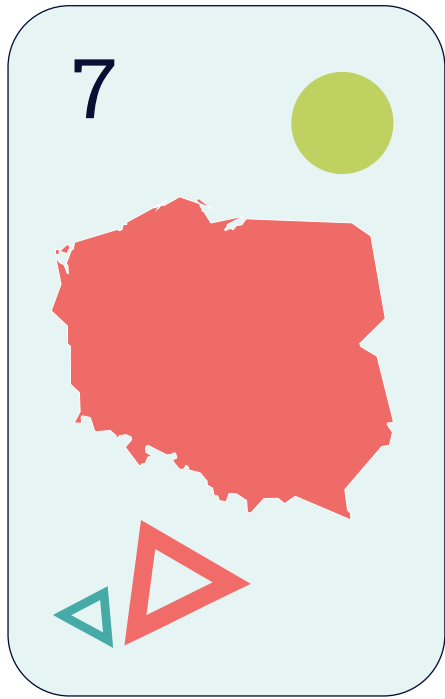
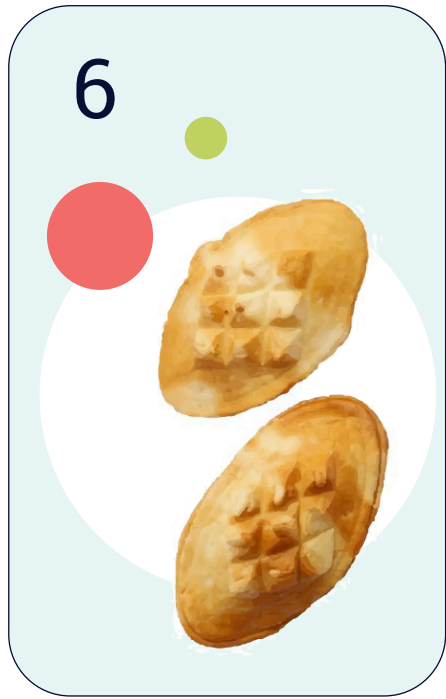
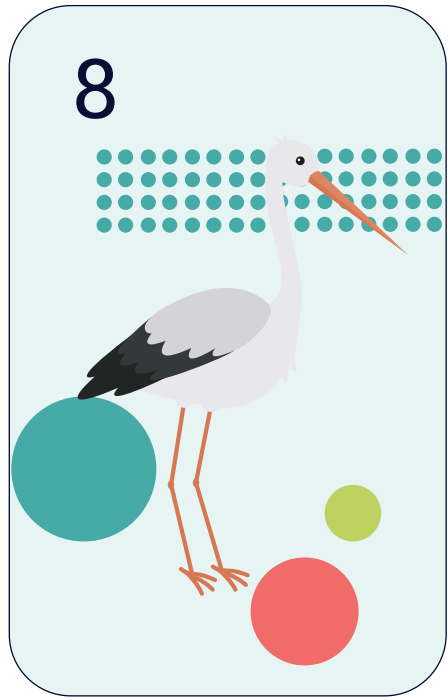
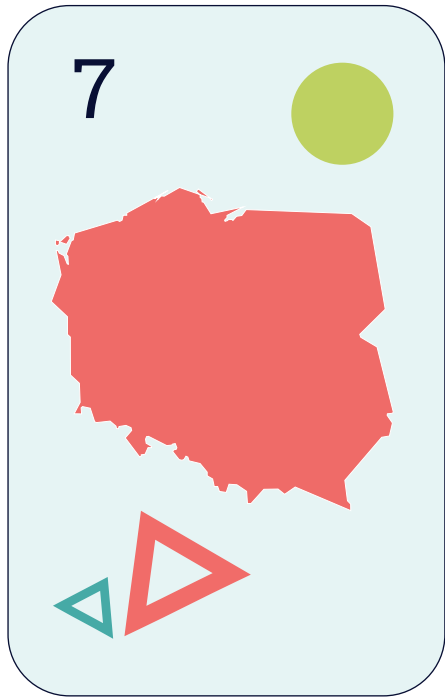
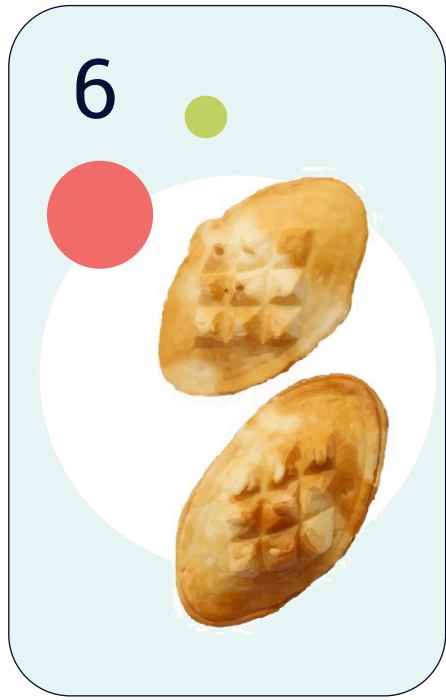
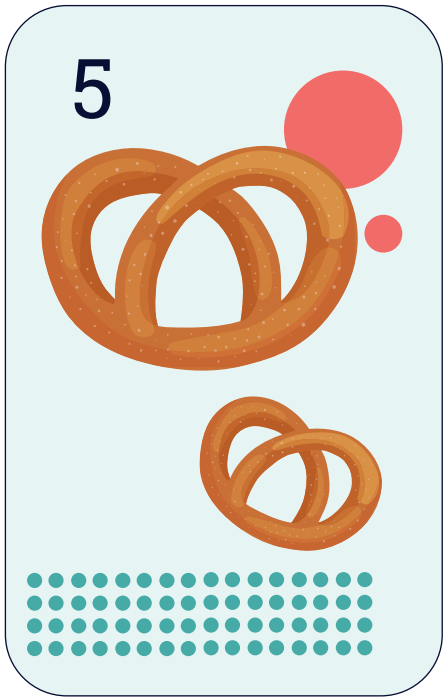
3

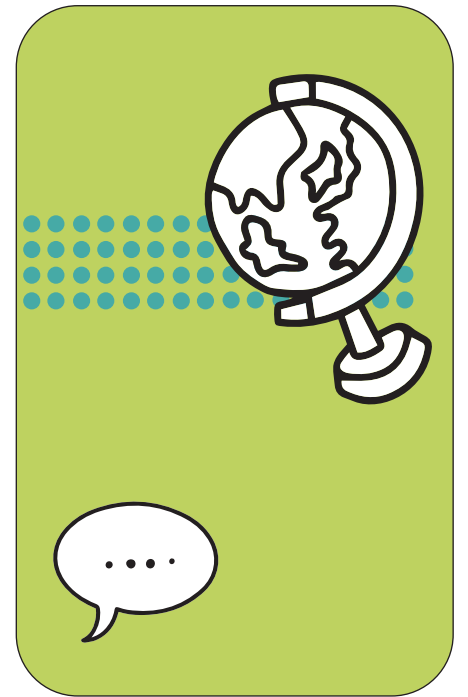
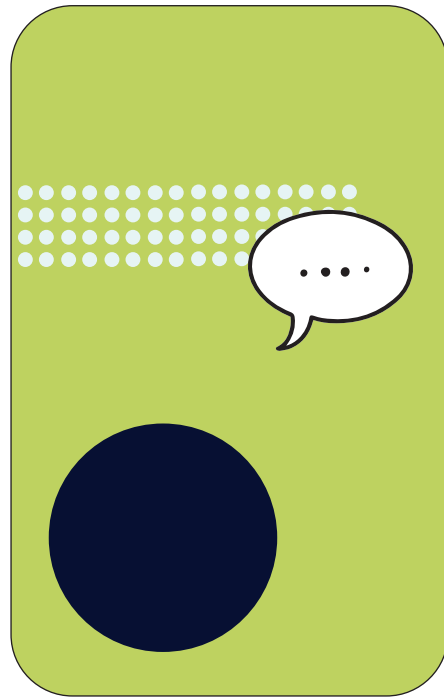
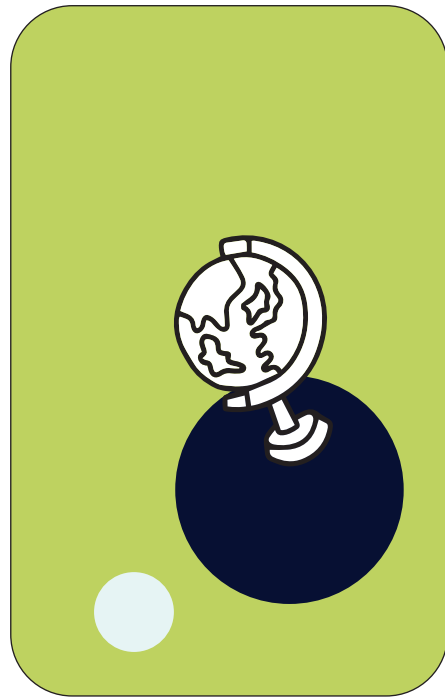
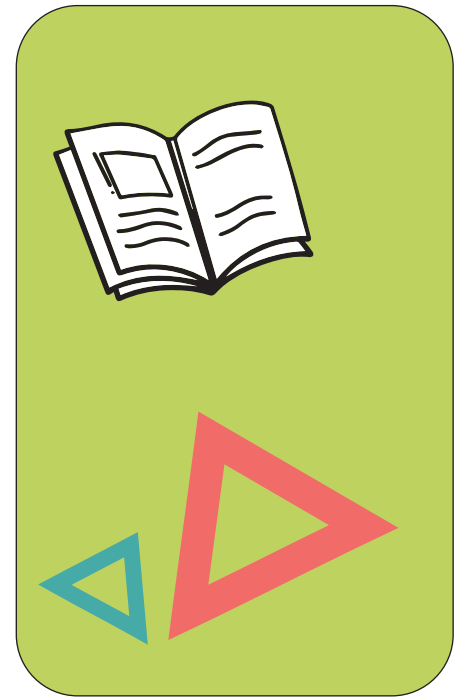
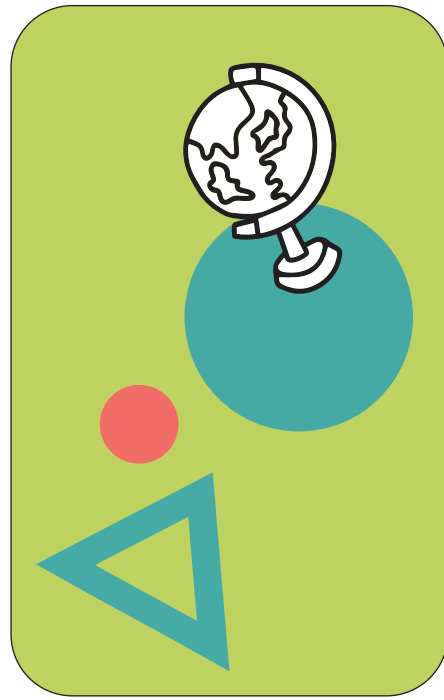
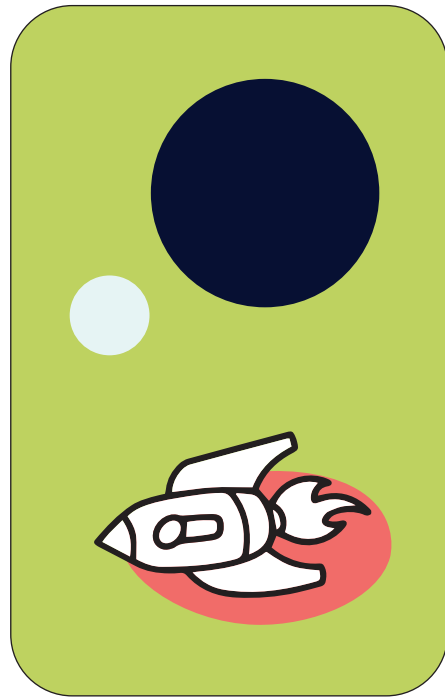
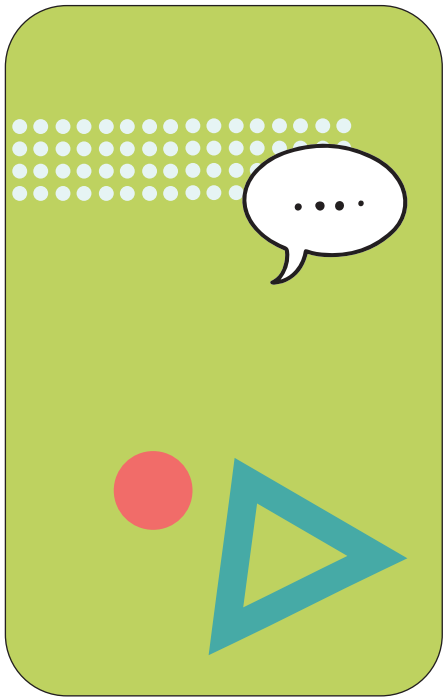


4









9



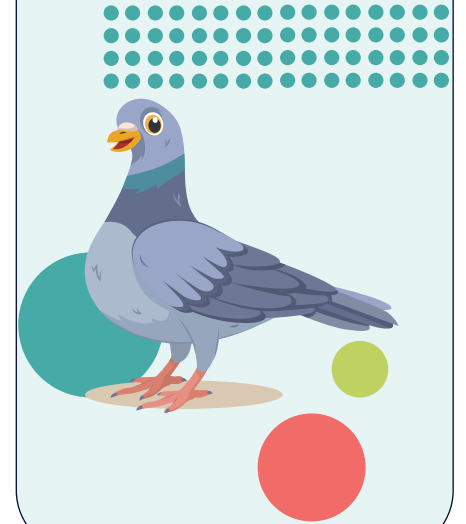
10



11



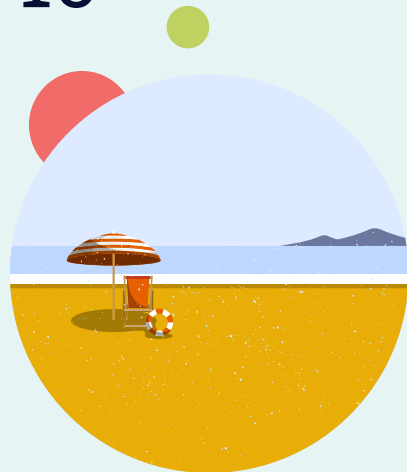
12



9



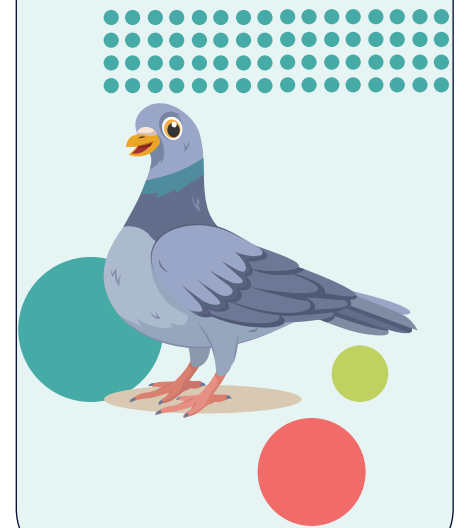
10

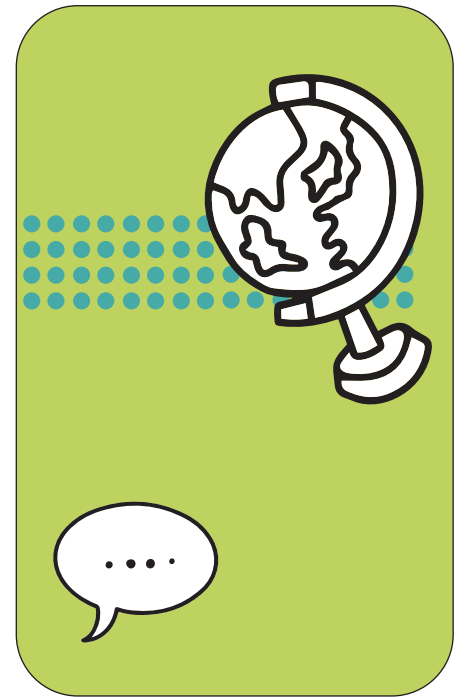
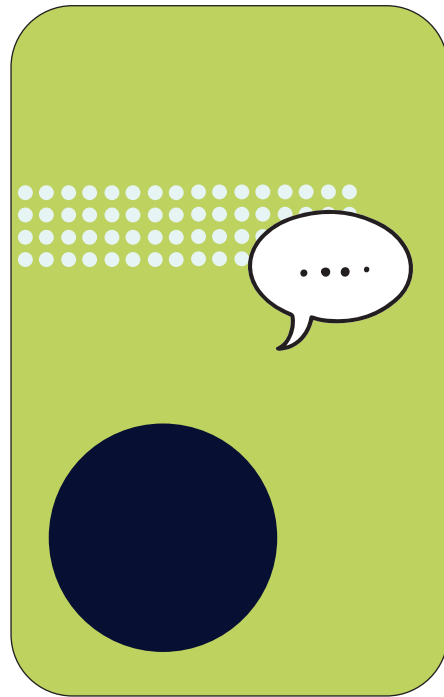
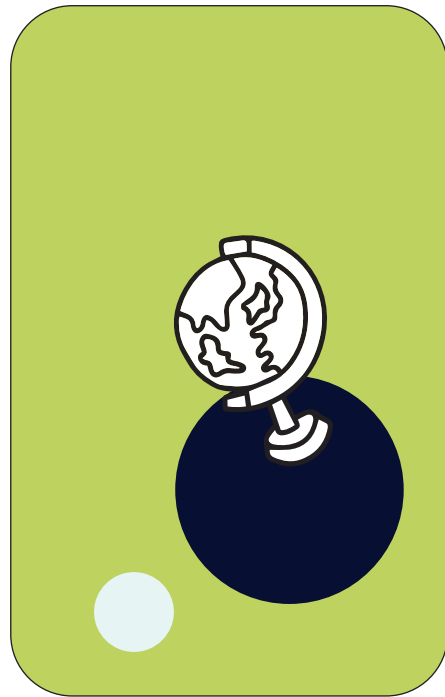
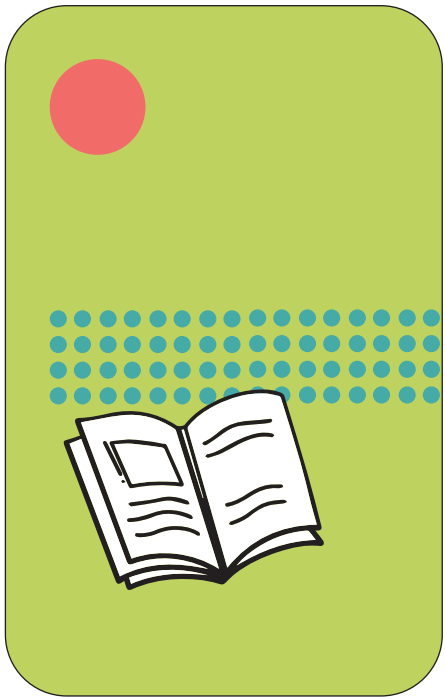
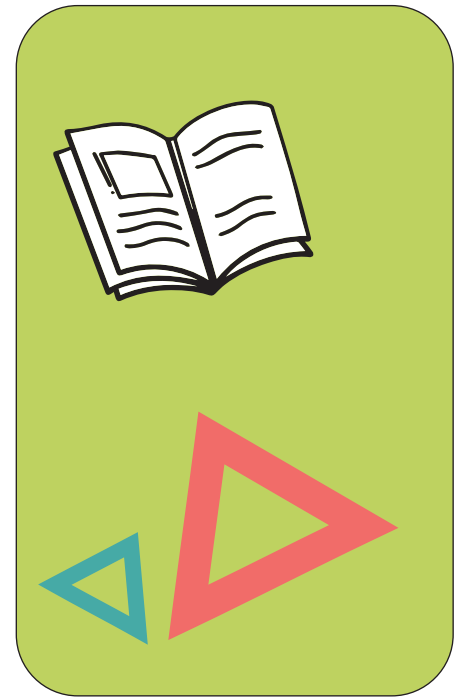
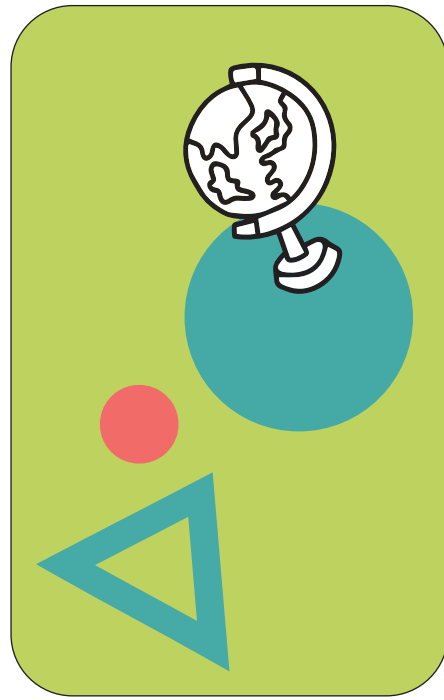
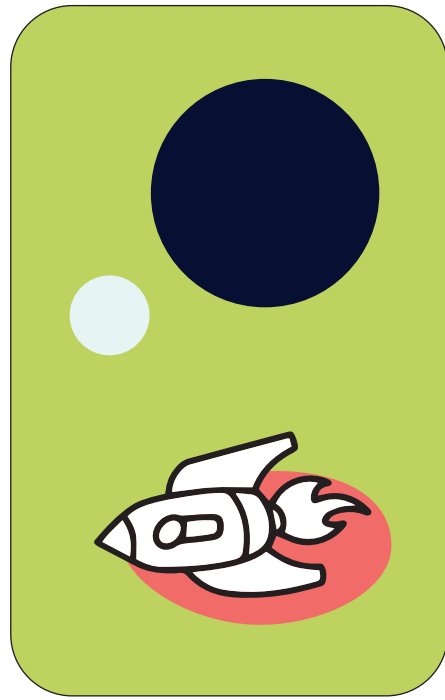
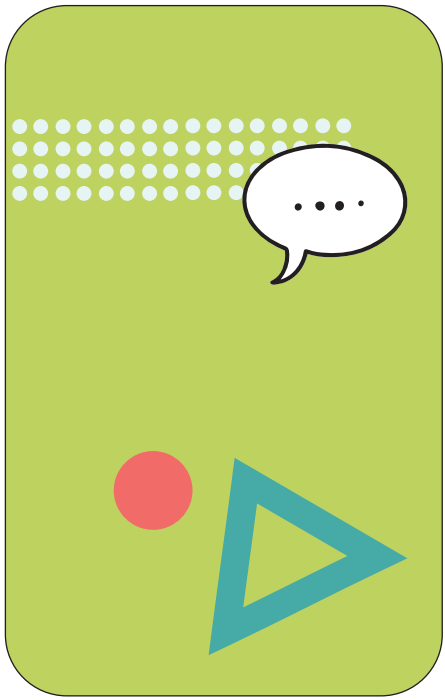


11



12





13



